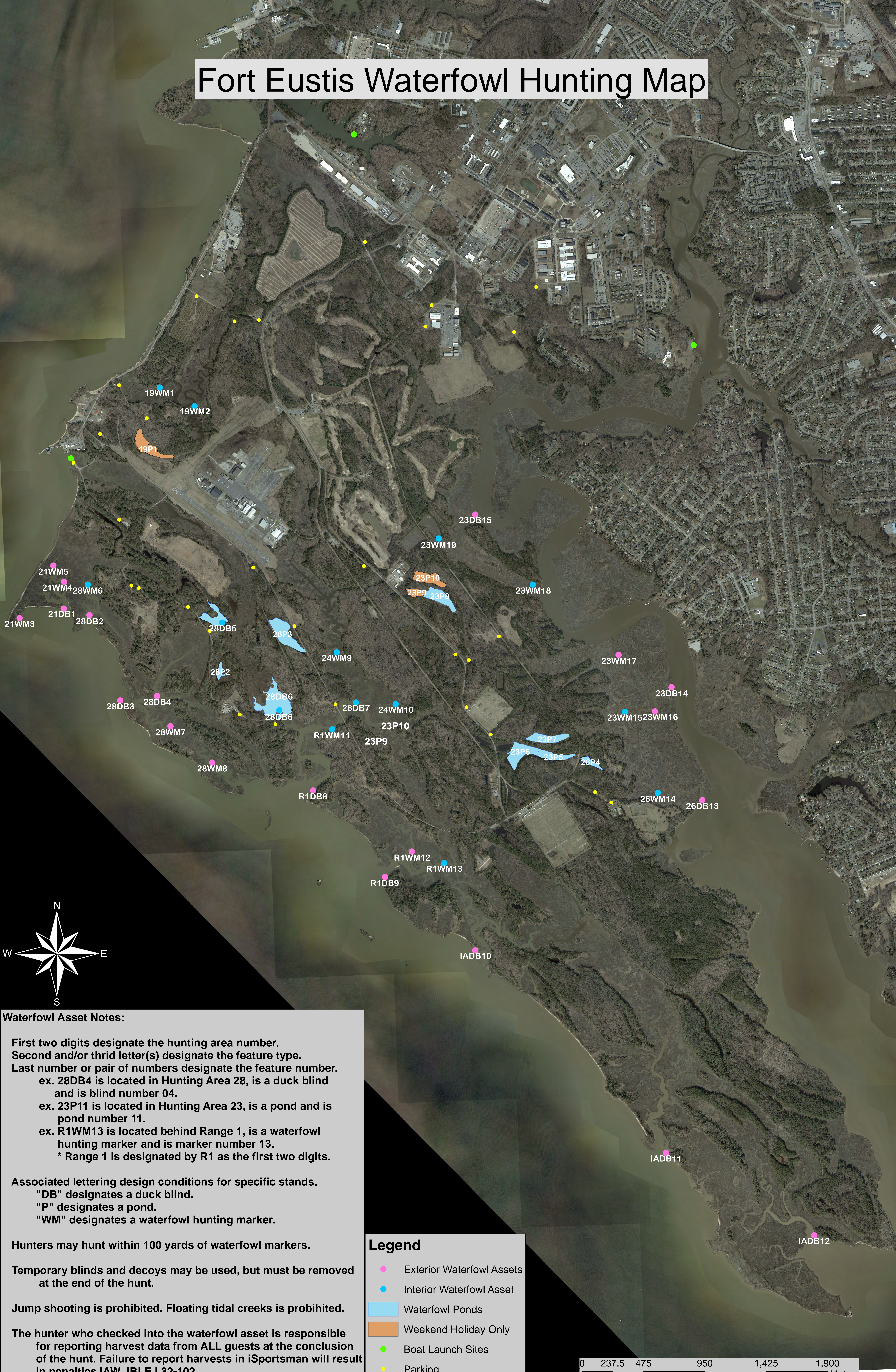


Fort Eustis Waterfowl Hunting Map



Waterfowl Asset Notes:

First two digits designate the hunting area number.
 Second and/or third letter(s) designate the feature type.
 Last number or pair of numbers designate the feature number.
 ex. 28DB4 is located in Hunting Area 28, is a duck blind and is blind number 04.
 ex. 23P11 is located in Hunting Area 23, is a pond and is pond number 11.
 ex. R1WM13 is located behind Range 1, is a waterfowl hunting marker and is marker number 13.
 * Range 1 is designated by R1 as the first two digits.

Associated lettering design conditions for specific stands.
 "DB" designates a duck blind.
 "P" designates a pond.
 "WM" designates a waterfowl hunting marker.

Hunters may hunt within 100 yards of waterfowl markers.
 Temporary blinds and decoys may be used, but must be removed at the end of the hunt.

Jump shooting is prohibited. Floating tidal creeks is prohibited.

The hunter who checked into the waterfowl asset is responsible for reporting harvest data from ALL guests at the conclusion of the hunt. Failure to report harvests in iSportsman will result in penalties IAW JBLE I 32-102.

Legend

- Exterior Waterfowl Assets
- Interior Waterfowl Asset
- Waterfowl Ponds
- Weekend Holiday Only
- Boat Launch Sites
- Parking

